

The Bodisattva Centre

3 Lansdowne Road

Hove

East Sussex

United Kingdom

Hove Park School

Minority Place Of Worship #1



A Buddhist place of worship,
and The World Peace Cafe & Peace Garden open to the public



Side view



Rear view



Description

The Blue Gumpa. One of two meditation rooms in The Bodhisattva Centre.

Position of the object

At the left (North) of the Bodhisattva Centre

(additional photos if possible showing other views, details etc.)



Description

This is the Red Gomba. One of two meditation rooms in the Bodhisattva Centre, this room was once the chapel of the convent.

Position of the object

At the right (south) of the Bodhisattva Centre

(additional photos if possible showing other views, details etc.)



Description

This is the Peace Garden. It is open to the public. It is a place where the whole sangha: Buddhist nuns, monks and lay Buddhists can find peace.

Position of the object

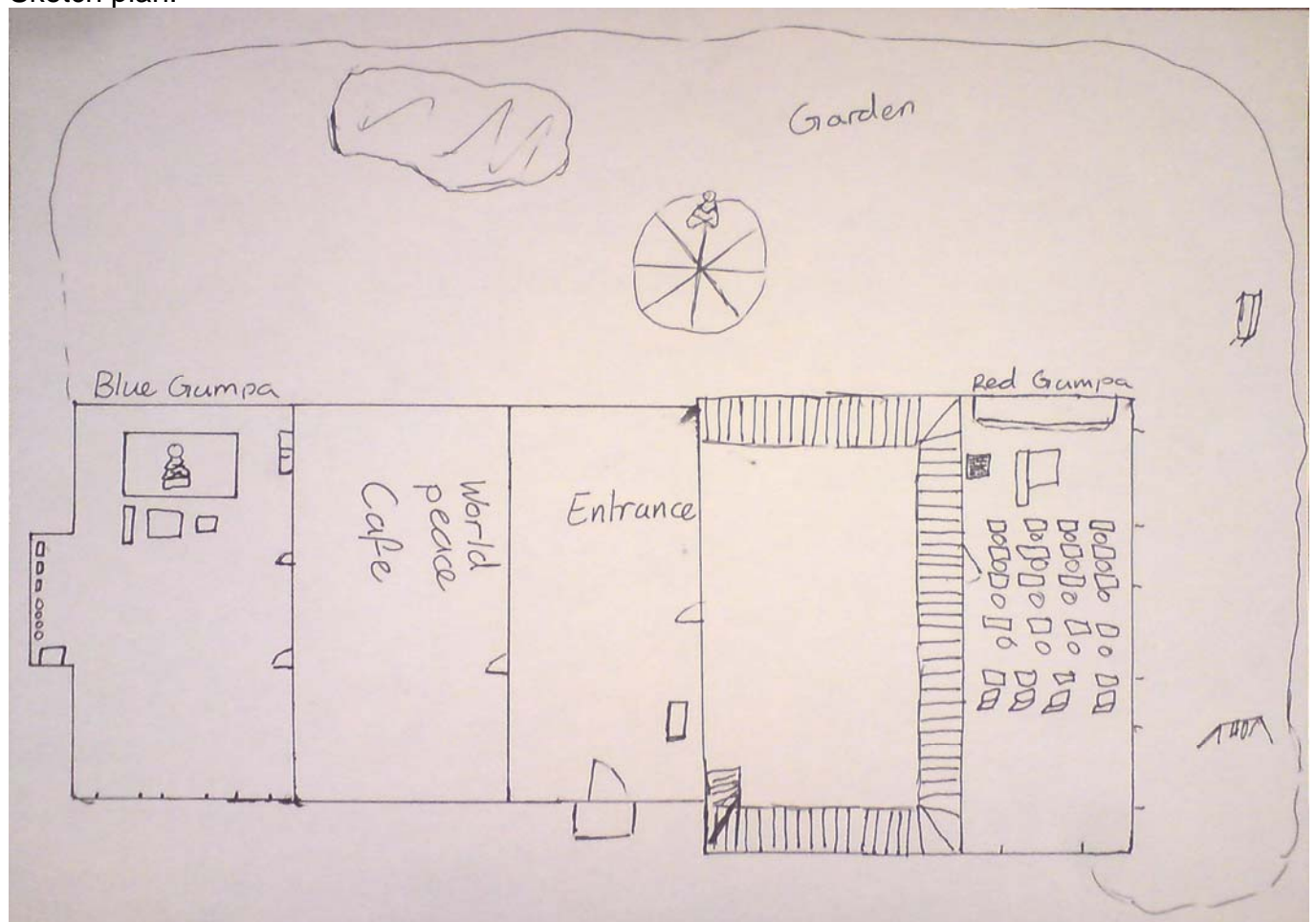
At the rear of the Bodhisattva Centre

Size	35m x 17m (Red Gumpa 17m x 8m, Blue Gumpa 16m x 10m)
Materials	Red brick and white-painted render.
Date of building/ epoch:	Late 19 th Century
Architect/ artist:	Unknown

History: including
Renovation,
restoration
(when, by whom
who paid, why?)

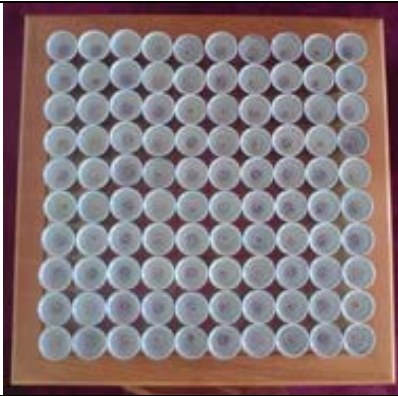
Number 3 Lansdowne Road was built as a *St Anne's* Catholic convent about 100 years ago. It was once used as an orphanage and later was abandoned and squatted. It became *The Bodhisattva Centre* in 1998 when it was bought and renovated by *The New Kadampa Tradition International Kadampa Buddhist Union*.

Sketch plan:



Interior

Picture	Name	Function
	<p>Books of Dharma (Teaching)</p>	<p>Representing the speech of the Buddha (1 of 3 essential parts of a Buddhist shrine.)</p>
	<p>Buddha statue</p>	<p>Representing the body of the Buddha (1 of 3 essential parts of a Buddhist shrine.)</p>
	<p>Stupa</p>	<p>Representing the mind of the Buddha (1 of 3 essential parts of a Buddhist shrine.)</p>
	<p>Geshs-La</p>	<p>Venerable Geshe Kelsang Gyatso teacher of Kadampa Buddhism.</p>
	<p>Offerings</p>	<p>Torma, alcohol, tea, cake, milk, curd and water</p>



Offerings

Water



Enlightened beings

A picture used during Guru worship



Dorje Shugden

An important Bodhisattva in Kadampa Buddhism



World Peace Cafe sign

The World Peace Cafe is open to the public and is a meeting place for members of the sangha.



Stained-glass window

A reminder of the Bodhisattva Centre's Christian history.